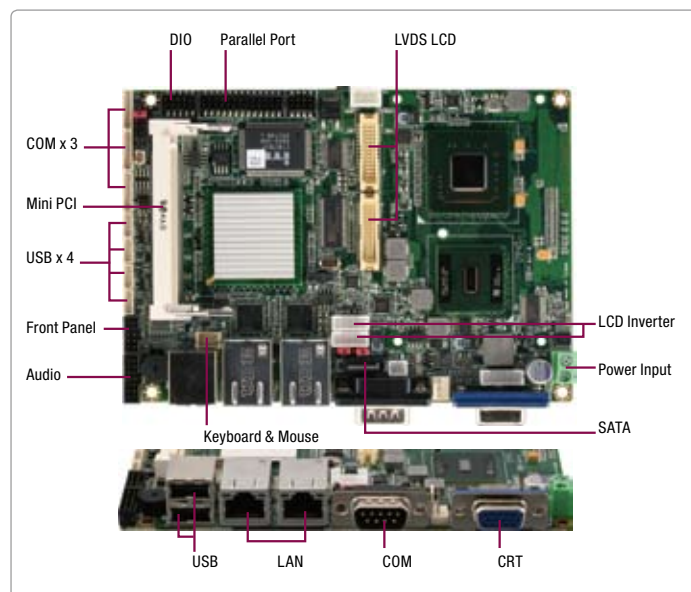


GENE-9455 Rev. B

3.5" SubCompact Board With Onboard Intel® Atom™ N270 Processor



Specifications

System	
Form Factor	3.5"
Processor	Onboard Intel® Atom™ N270 Processor 1.6 GHz , FSB 533 MHz
System Memory	200 pin DDR2 SODIMM x 1, Max. 2 GB (DDR2 400/533)
Chipset	Intel® 945GSE + ICH7M
I/O Chipset	ITE8781
Ethernet	Intel® 82574L, 10/100/1000Base-TX, RJ-45 x 2
BIOS	Award Plug & Play SPI BIOS - 2 MB Flash
Wake on LAN	Yes
Watchdog Timer	Generates a time-out system reset
H/W Status Monitoring	Supports power supply voltages and temperature monitoring
Expansion Interface	Mini PCI x 1, Mini Card x 1
Trusted Platform Module (TPM)	Infineon SLB 9635 TT 1.2 (Optional)
Battery	Lithium battery
Power Requirement	+12V, AT/ATX
Power Consumption (Typical)	Intel® Atom™ N270, DDR2 533 2 GB 1.55A@+12V
Board Size	5.75"(L) x 4"(W) (146mm x 101.6mm)
Gross Weight	0.88lb (0.4kg)
Operating Temperature	32°F ~ 140°F (0°C ~ 60°C)
Storage Temperature	-40°F ~ 176°F (-40°C ~ 80°C)
Operating Humidity	0% ~ 90% relative humidity, non-condensing
MTBF (Hours)	70,000
Display	
	Supports CRT/LCD simultaneous/ Dual view displays
Chipset	Intel® 945GSE integrated
Memory	Shared system memory up to 224 MB/DVMT 3.0
Resolutions	Up to 1920 x 1440 for CRT/ Up to 1920x 1200 for LCD
LCD Interface	Dual LVDS LCDs: 18-bit Dual-Channel LVDS LCD + 24-bit Dual-Channel LVDS LCD
I/O	
Storage	SATA 1.5Gb/s x 1, Type 2 CompactFlash™ x 1
Serial Port	RS-232 x 3, RS-232/422/485 (auto flow) x 1
Parallel Port	SPP/EPP/ECP x 1
Universal Serial Bus	USB2.0 x 6
PS/2 Port	Keyboard x 1, Mouse x 1
Digital I/O	Supports 8-bit (Programmable)
Audio	Mic-in, Line-in, Line-out, CD-in

Features

- Onboard Intel® Atom™ N270 Processor With 1.6 GHz
- Intel® 945GSE + ICH7M
- SODIMM DDR2 400/533, Max. 2 GB
- Gigabit Ethernet x 2
- CRT, Dual LVDS LCDs: 18-bit Dual-Channel LVDS LCD + 24-bit Dual-Channel LVDS LCD
- AC97 2.3 Codec 2CH Audio
- SATA 1.5Gb/s x 1, CompactFlash™ x 1
- USB2.0 x 6, COM x 4, Parallel x 1, 8-bit Digital I/O
- Mini PCI x 1, Mini Card x 1
- +12V Only Operation
- Onboard Trusted Platform Module (Optional)



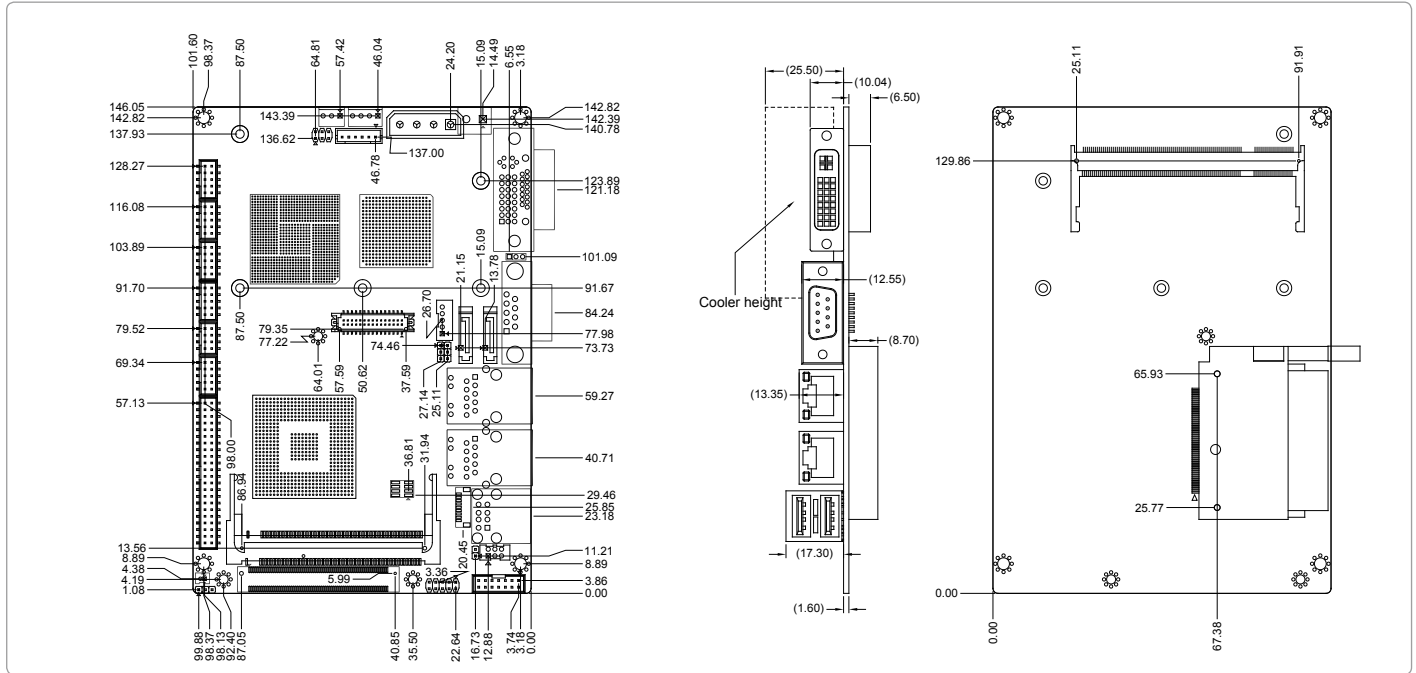
Packing List

- 1700060157
KB/Mouse Cable
- 9657666600
Jumper Cap
- Heatsink
- Product CD
- GENE-9455 Rev. B

GENE-9455 Rev. B

Dimension

Unit: mm



Ordering Information

Part Number	CPU	Fan/Fanless	Display	LVDS	Storage	LAN	USB	RS-232	RS-232/422/485	Expansion Slot	Power	Temp
TF-GENE-9455-B10	Intel® Atom™ N270	Fanless	CRT + LVDS LVDS+LVDS	1st 18b, 2CH 2nd 24b, 2CH	SATA x 1 CompactFlash™ x 1	GbE x 2	6	3	1	Mini Card x 1 Mini PCI x 1	+12V/ AT/ATX	0°C ~ 60°C

Optional Accessories

- **1700050207**
USB Cable, Length 20cm
- **1701090150**
COM Port Cable, Length 15cm
- **1701260200**
Parallel Port Cable, Length 20cm
- **1709070500**
SATA Cable, Length 50cm
- **1709140181**
Audio Cable, Length 18cm
- **1702002010**
Big 4P Power Input Cable for +12V Input, Length 10cm
- **170220020B**
Conversion Cable for ATX Power Supply, Length 20cm
- **1702150155**
Power Cable for 2.5" SATA Hard Disk, Length 15cm